

[Museums
Australia]

.....
*Annual
Report
2010*

[Museums]
[Australia]

.....
Annual
Report
2010



Australian Government

**Department of the Environment,
Water, Heritage and the Arts**

Museums Australia operates with the kind
support of the Australian Government.

Museums Australia Incorporated

PO Box 266

CIVIC SQUARE ACT 2608

Telephone 02 6273 2437

Facsimile 02 6273 2451

ABN 83 048 139 955

Auditor

Synergy Group Australia Limited

PO Box 5085

BRADDON ACT 2612

Telephone 02 6260 7477

Facsimile 02 6260 7499

ABN 65 119 369 827

Designed by Selena Kearney

Printed by BlueStar Print, Canberra

.....
Table of Contents

President's Introduction	4
National Director's Introduction	5
About Museums Australia Inc	6
National Council 2009-2011	8
Branches	8
National Networks	15
Membership	17
Advocacy	20
Publications	21
Website & Online Facilities	22
Awards	24
Partnership Awards	25
Events	26
Institutional Members	28

.....

President's Introduction

On behalf of the National Council of Museums Australia (MA), I am pleased to present the Annual Report for the year 2010.

Museums Australia will continue its strong advocacy role in 2011-12, and meet regularly with the federal Office for the Arts to ensure liaison and advocacy on cultural and museums sector issues, as well as pursuing opportunities to take up these issues directly with Arts Minister, The Hon Simon Crean, and fellow ministers whose portfolio responsibilities intersect with issues of vital relevance to the museums sector – notably cultural heritage and the environment; school education and tertiary education and research; Indigenous community issues; and the health and wellbeing of communities, especially regional communities, given Museums Australia's unique geographical footprint across the country through its Institutional and Individual members.

The MA Council has approved a Strategic Plan for 2011–2016, which will provide a framework and signposts for the development of the national association in forthcoming years. The National Council will establish working parties around specific objectives within the Strategic Plan, to ensure maximum engagement and feedback reports across the great range of areas that make up the services-focus and professional development agenda of the national association for the museums sector. MA is acutely conscious of the continuity, service and advocacy issues for the sector that have been especially sharpened since the demise of the Collections Council of Australia, which ceased operations in April 2010.

In terms of services provision across the museums sector nationally, I note the continued commitment, early in 2010, of months of work by the National Office with the Australian National Data Service (ANDS) – towards a national partnership project with CAMD (Council of Australasian Museum Directors); this project was long envisaged as achieving a nationally accessible platform for access to museums' collection-level data, to be more readily available to researchers. This project later became known as the MME (Museum Metadata Exchange) digitisation project, of which the delivery is now led by CAMD in partnership with the Powerhouse Museum, discharging a \$500,000 grant eventually awarded to the project's realisation by ANDS.

I have subsequently co-chaired the steering committee of the MME/ANDS-funded Project with CAMD Chairperson, Margaret Anderson, supported by an MME technical committee - which coordinates the detailed work with the CAMD museums engaged as partner institutions for the project (the Australian museums headed by the CAMD directors). I will continue to foster the partnership with CAMD on the MME project in 2011, until the project's scope has been realised and the funding is discharged. From Museums Australia's vantage-point, efforts will be made to pursue the sustainability of the MME data portal for the sector and researchers beyond the completion date of 2011.

Realisation of an outstanding National Conference for the sector, in Melbourne, late September to early October 2010, was again a highlight of the calendar year embracing state gatherings and many other events and gatherings right around Australia. I thank the federal government especially (through its Department of Environment, Heritage and the Arts/DEWHA) for a special-purpose grant that enabled increased bursaries and remote-area participation in the very success Regional + Remote day-long program that has become a regular addition to the National Conference in recent years. I also thank the Environment section of DEWHA for funding that has enabled some defrayment of administrative costs of MA, through the GVEHO program (Grants to Voluntary Environment and Heritage Organisations).

The MA Annual Report 2010, the audited financial statements for 2010, and the outcomes of the MA National Council election 2011-2013, will be submitted to the relevant agencies in the ACT, where Museums Australia's incorporation as a national association is registered.

I thank the MA National Office and the State and Territory branches for their contributions to the Annual Report, ensuring that this report provides both a national and State/Territory overview of the very important work being undertaken by Museums Australia across the huge regional extent and diversity of our communities nationally.

My final thanks goes to Dr Don McMichael CBE, for continuing to render much appreciated service as Public Officer of Museums Australia.



A handwritten signature in black ink, appearing to read 'Don McMichael', written in a cursive style.

National Director's Introduction

Throughout the pages of the Report that follow, members and other readers will find both a broad overview and performance account for the calendar year, as well as some finer detailing of the work of the national association during 2010.

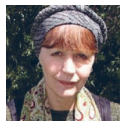
On behalf of the National Office, located within Old Parliament House, Canberra, brief highlights of achievements in 2010 include the following key changes or improvements in services provision:

- a fully redesigned and Beta-tested national Website that went live in May 2010 – for the first time facilitating direct online membership renewal by MA members; and continued service-upgrade of the website since the new site was launched;
- a review of MA's 22 National Networks (for specialist areas of museum work), and pursuit of a variety of member feedback surveys, forming the basis of a new membership strategy for the association developed in 2010;
- a considerable overhaul of communications, aimed at (a) coordination of improved presence, visual identity and consistency throughout all publications projecting the work of the association nationally, and (b) engaging and empowering more parts of the association to access various communication channels directly at most relevant local touchpoints – including more affirmatively emphasising the crucial role of State/Territory branches and divisions;
- regularisation of an MA e-Bulletin for members nationally – now maintained once weekly on Thursdays;
- continued production of MA Jobs Bulletins, as requested, which remain one of the key organs for broadcast of professional employment vacancies and opportunities nationally; further service improvement was achieved through a publicly visible Jobs Bulletin Board calendar, maintained while positions are still open – which increases value for institutions advertising to fill vacancies, since it broadcasts to any visitors to MA's website (not simply members);
- continued improvement of the MA Magazine and production system, its full public accessibility (including electronic access) with each new issue released, and an affirmative balance of content across different thematic areas, from capital city institutions to regional

and volunteer-run museums, and affirmatively targeting regular inclusion of Indigenous subjects and colleagues, as well as regional and remote subjects and colleagues;

- development of the social networking site <maNexus> to facilitate increased and more informal styles of communication suited to specific constituency needs;
- continued partnership, for a third year, with ABC Radio National in support of ABC RN's presentation of a Museums Week theme in ABC RN programming around International Museum Day, 18 May 2010; and development, judging and final awarding of the ABC's Awards to Regional Museums, especially to small and volunteer run museums in 2010; the ABC's two national Awards were announced on Fran Kelly's Breakfast program on 18 May – and winning institutions received trophies presented at the inauguration of the MA National Conference, end-September;
- continued partnership with the Australian National Committee (ICOM Australia) of the International Council of Museums (ICOM, Paris), to project the international associations and developmental paths for Australian colleagues accessing contacts with museums sector partners internationally; the ICOM Australia partnership, and promotion of international events through ICOM's 31 International Committees, has become a regular strand of both Museums Australia's Magazine and e-Bulletin communication channels; Museums Australia has continued to administer the annual subscriptions and renewals for ICOM memberships – enabling the National Executive Committee of ICOM Australia, under national President, Frank Howarth (Director of the Australian Museum, Sydney), to pursue a focus on programs and services rendered by this important body and portal to the museums sector internationally.

Further information about the work of Museums Australia in 2010 will be found in the various sections of this Report and on the MA website <www.museumsaustralia.org.au>



A handwritten signature in black ink that reads "Bonnie L. Murphy". The signature is written in a cursive, flowing style.

About Museums Australia Inc

Museums Australia is a national association comprising Individual and Institutional members, National Networks/Special Interest Groups (SIGs) and state/territory-based Branches. New South Wales and Western Australia branches also host Chapters. The National Council, supported by the National Office, provides for the development of policies, services, and national strategy and advocacy to advance the agreed aims of the organisation.

Museums Australia members create, shape and steer the organisation through participation in the Association's activities, through Council membership and support for the work of Council Standing Committees; and through membership of the 23 National Networks (previously Special Interest Groups/(SIGs); 8 State/Territory Branches; and 18 sub-S/T Chapters. All of these variegated components of the national body together enable MA to support and strengthen the work of the museums sector in all regions across the nation.

Members of the Association are bound by Museums Australia's Code of Ethics and Museums Australia, especially through its partnership with ICOM Australia, upholds the ICOM Code of Ethics for Museums (2004) as the base standard promulgated by the International Council of Museums (Paris) in 2004 (3rd edition), published 2006. Governance of MA as an Association is conducted in accordance with the Museums Australia Constitution and by By-Laws, including some modifications for Museums Australia Divisions that were adopted in 2004, with subsequent minor amendments by Council in 2008.

An important role that Museums Australia plays is to develop services, programs and projects, according to agreed policies and frameworks, which help guide the work of the museums sector in Australia. The Association's current policies and guidelines continue to serve the museums sector.

National Association Funding

The work of the Association is primarily enabled through its members. Membership fees support the Association's activities, however the MA National Office was granted 3-year funding through the 2008/09 round of multi-year Grants to Voluntary Environment and Heritage

Organisations (GVEHO) program, administered by the then Commonwealth Department of the Environment, Heritage, Water and the Arts (DEWHA). The GVEHO grant provides up to \$30,000 annually to assist coverage of administrative costs of the National Association for the three year period, 2009-2011. MA also received secretariat funding from ICOM Australia. Museums Australia (Victoria) and Museums Australia (WA) are funded through their state governments to provide services to the museums and galleries within their respective states.

Partnerships

Museums Australia has developed many strong partnerships with other national and international organisations. MA's key ongoing partner is ICOM Australia (the National Committee of the International Council of Museums, Paris). Museums Australia National Office provides Secretariat services for ICOM Australia, including financial and membership administration.

ABC Radio National again requested Museums Australia's partnership in holding the 2010 ABC Radio National Regional Museum Awards. National Director Bernice Murphy participated as a judge.

Museums Australia seeks to increase strategic partnerships in 2011 and into the future, including co-hosting the 2011 National Conference with Interpretation Australia in Perth (14–20 November 2011).

Memberships & Affiliations

Museums Australia continues its own memberships of several key sector associations and organisations, including Associations Forum (for professional development opportunities); Australian Copyright Agency Limited; Council for the Humanities, Arts and Social Sciences (CHASS); and Blue Shield Australia (BSA).

National Council Standing Committees & Taskforces

The National Council reviewed (and renewed) active Standing Committees operating in 2010. Active Standing Committees for 2010 have covered these functions:

- Editorial Governance
- Membership
- Publications

Staff

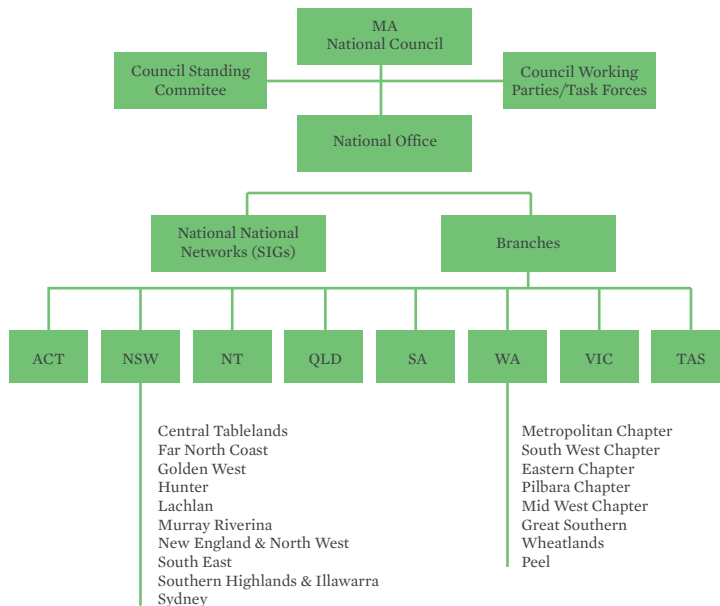
The National Office human resources budget remains tightly constrained by low finances (since loss of Australia Council funding more than a decade ago, which reduced staffing by 85 per cent). At the end of 2010, human resources provision had supported two full-time staff for another year. National Networks Manager, Marie Wood, retired in the second half of 2010, after playing a major role in nurturing and securing MA's partnership with CAMD in the Museum Metadata Exchange (MME) project – funded by the Australian National Data Service (ANDS) and hosted at the Powerhouse Museum. Stephanie Hamilton joined the National Office in March 2010, as Assistant Manager, Communications. She supports the Manager in membership, financial and general administration. The National Director continued to provide contracted services, outside of the permanent staff complement, effectively full-time, but contracted up to .8 hrs EFT weekly. This arrangement has continued, for some years, as the best means of securing continuing National Office operations and leadership year-round, within tightly limited financial means.

MA's Victorian state branch, Museums Australia (Victoria), supports an effective team of full-time, part-

time and contracted staff for various programs in the state. The Victorian staff, led by CEO Laura Miles, are generously housed and supported by Museum Victoria at Melbourne Museum. MA (Vic) staff presented the biggest ever Museums Australia National Conference, in 2010, in Melbourne (www.ma2010.com.au). This achievement has strengthened the record of the national association's provision of a museums-sector national conference annually, in a progressively changing host capital or regional city in different States and Territories.

MA (NSW)'s Executive Officer, Paul Bentley, has again been greatly involved in the maintenance and growth of the NSW Branch, volunteering many hours in addition to those hours paid under contract. On the other side of Australia, MA (WA), under Executive Officer Jane King, manages a resilient program within constrained resources (part State provided; part Lotterywest provided) to deliver many services to Western Australian members and other museums-sector colleagues. MA (WA), however, has also enjoyed the generous patronage of the Museum of Western Australia in providing accommodation for its service-functions to the state.

All other MA divisions and subdivisions are fully operated by volunteer staff.



National Council 2009-2011

Executive

PRESIDENT

Dr Darryl McIntyre

(former CEO, National Film and Sound Archive, Canberra)

VICE-PRESIDENT

Lorraine Fitzpatrick

(Senior Project Officer, Royalties for Regions, Cultural Centre, Carnarvon, WA)

TREASURER

Timothy (Tim) Hart

(Director, Information, Multimedia & Technology, Museum Victoria, Melbourne)

SECRETARY

William (Bill) Storer

(previously: President, MA-NSW; Chair, Community Museums Network; Newcastle)

Ordinary members

Suzanne Bravery

(General Manager, Programs and Services, Museums & Galleries NSW, Sydney)

Belinda Cotton

(Head, Travelling Exhibitions, National Gallery of Australia, Canberra)

Richard Mulvaney

(Director, Queen Victoria Museum & Art Gallery, Launceston)

Jennifer Sanders

(former Deputy Director of Collections and Outreach, Powerhouse Museum, Sydney)

William (Bill) Seager

(Redevelopment Content Manager, Tasmanian Museum and Art Gallery, Hobart)

Soula Veyradier

(Curator, City of Melville Museum & Local History Service, Booragoon, WA)

PUBLIC OFFICER

Dr Don McMichael CBE

Branches

Australian Capital Territory

President

Carol Cartwright

Vice-President

Roxanne Lamby

Secretary

Kassandra Hobbs

Treasurer

Glenda Smith

Committee members

Claire Bradley

Roger Garland

Gabrielle Hyslop

Alex Marsden

The Branch enjoyed another comprehensive calendar of professional development and recreational events, including a particularly well-attended 2010 Christmas party at the National Portrait Gallery. The Branch presented Robyn Archer AO, Canberra Centenary Creative Director, with a complimentary Gold membership to Museums Australia at the Christmas party.

Finances remain sound, although there was a commitment by this committee to spend some of the accumulated funds on members and activities this year.

Communication with ACT Branch members continues through the use of e-Bulletins and the MA website Branch page.

The Branch Strategic Plan 2009-2012 provided framing directions and focus for activities for the year 2010.

The MA (ACT) Branch plan identifies four strategic priorities:

1. Undertake advocacy and communication
2. Develop business practices, infrastructure and resources
3. Enhance members' programs; and
4. Plan for the 2013 National Conference & Canberra centenary

New South Wales

President

Dr Andrew Simpson

Vice President

Rebecca Pinchin

Treasurer

Ally Halliwell

Committee members

Bronwyn Alcorn

Goeff Barker

Suzanne Bravery

Marea Buist

Gay Hendriksen

Maree Clutterbuck

NSW Branch programs revolved around bursaries to the National Conference in Melbourne; presentation of the

IMAGinE museum recognition awards, in partnership with Museums and Galleries NSW, Public and Regional Galleries NSW and Museums Australia ACT Branch; production and distribution of *Museum Matters*; and the presentation of tours, events and talks for sectoral colleagues in Sydney.

In the past 12 months, we have stepped up advocacy efforts, particularly through dialogue with the state Minister for the Arts and Arts NSW, and preparation of associated case-materials for advocacy purposes. We continue to seek funds for a comprehensive survey of community and regional museum needs in NSW, or one limited to ICT and digitisation needs, as a guide for future association strategies within the state.

We were pleased to see strong efforts in a number of chapters, largely as a result of the commitment of chapter coordinators and office bearers in the regions. And we note, with great sadness, the death of Lachlan Chapter coordinator, Glen Johns, whose annual Working Spaces workshops for museum volunteers made such a significant contribution to the association and the sector at large – as covered in a tribute article in *Museums Australia Magazine*, Vo. 19(3), February 2011.

The NSW branch allocated \$2,000 for bursaries to the Museums Australia National Conference in Melbourne, Sept-Oct. 2010.

The 2010 events and professional development program included visits to Elizabeth Farm, NSW Schoolhouse Museum, Australian Museum (new research and collection building), Art Gallery of NSW (remote storage facility), and Mary MacKillop Museum. Our 2011 program kicks off with a tour of the Powerhouse Museum Conservation Lab on 2 March. Other 2011 tours lined up include the Museum of Freemasonry, May Gibbs' Nutcote, State Library of NSW, and Royal Botanic Gardens, Sydney.

Following improvements to the national website by the MA National Office, the state branch has added branch publications and documents, and prepared the site to manage registrations for the April 2011 symposium. The NSW Branch group on the association's social media site <maNexus> now has 38 members, and we encourage members to sign up to both the <maNexus> site and the NSW group. A Twitter account has been set up to promote events such as the NSW symposium. We published two issues of *Museum Matters* in 2010, one featuring regional museums in an online future, and the

other featuring the subject of exhibitions. The Museums Australia National Council Publications Committee, led by Dr Andrew Simpson and with the involvement of the NSW Branch executive officer, is reviewing online and printed publications and expects to make recommendations to National Council in June 2011.

With partners, MA ACT Branch, M&GNSW and RPGNSW, MA (NSW) presented the 2010 awards at the Museum of Contemporary Art, Sydney, on 22 October. Planning is underway for the 2011 awards.

NSW Chapters

The Chapter plan 2010-2011 outlines strategies for streamlined governance and administrative processes, and for supporting and developing the chapter network. In October 2010, guidelines regarding chapter by-law templates and administrative tools were distributed for discussion at the 2011 Chapter representatives meeting.

Northern Territory

President **Michelle Smith**
Vice-President **Michael Cawthorn**
Secretary/Treasurer **Janie Mason**
Committee members
Helen Joraslafsky Jenny Bloomfield
John Bloomfield Joanna Barrkman

MA (NT) made a submission to the NT Government's *Building our Museums and Galleries* working party (BOMAGS), ensuring that the needs of all museums, galleries and keeping places within the Northern Territory would be addressed. In addition MA(NT) has encouraged its members to make further submissions individually. The number of submissions made to the working party was considerable and reflected the importance of the museums and galleries sector to the Territorian community.

MA (NT) offered two bursaries for individual members of MA who had not previously attended an MA National Conference. The successful applicants were assisted with travel and accommodation costs to travel to Melbourne late in September.

A Newsletter was sent to members in November 2010, summing up the activities of museums across the Territory and including conference reports from NT members who attended the MA conference in Melbourne.

A highlight for the year was the success of Patakijiyali Museum on Bathurst Island, in winning the ABC Regional Museums Award for Best Indigenous Culture Centre or Keeping Place. This volunteer-run museum manages to produce excellent exhibitions and is involved in key long-term partnerships across the Bathurst Island community, despite adverse conditions and limited resources.

In 2011, MA (NT) will continue to be involved in the BOMAGS consultations, and make comments on the draft plan. Hopefully it will result in some good outcomes for the regional museums sector in the Northern Territory, and MA (NT) will continue to work with the division of Arts and Culture to progress important causes.

MA-NT has agreed to support the Fourth International Congress of Women's Museums, which will be held in Alice Springs in May 2012. This is a very exciting event for the Territory, and MA-NT hopes to welcome visitors from across Australia as well as internationally. Helen Joraslafsky, at the National Pioneer Women's Hall of Fame, is coordinating the event, after having attended the previous three events internationally. MA-NT will sponsor a 'welcome' event at the beginning of the Congress, allowing other museum workers and volunteers in Central Australia to mix and mingle with our overseas guests. While this event will occur in 2012, MA-NT has begun working on plans to promote the event through the MA National Networks across the country.

Queensland

President	Lisa Jones
Secretary	Josh Tarrant
Treasurer	Brian Tucker

MA (QLD) member services are administered by Museum and Gallery Services Queensland. The MGSQ report can be accessed through their website <http://www.magsq.com.au/01_cms/details.asp?ID=1>.

South Australia

President	Robert Morris
Vice-President	Jill Mackenzie
Secretary	Regan Forrest
Treasurer	Alexis Tindall
Committee members	
Elsbeth Grant	Mirna Heruc
Alison Russell	

Committee numbers have been stable for the past year, despite the regretfully accepted resignation of some committee members due to work commitments and other time pressures. Despite this, MA (SA) have maintained a 7-8 member committee, with a core of members who have served for at least two years. They will seek to recruit some additional committee members at the May AGM. Through experience, colleagues have found that a committee of 8-9 members is a workable and achievable number in SA. However, given that the committee draws membership from a relatively small population base in South Australia, it should be noted that maintaining sufficient committee numbers in order to run the branch appropriately will continue to be an issue in the medium-long term, particularly in 3-4 years when many of the existing committee will reach retirement following 8 years' service.

State History Conference – for the past three years MA (SA) has been a sponsor of the State History Conference run by History SA. In 2010, MA (SA) sponsored a session 'Creating and Managing Images in the Digital Age'. MA (SA) continues to have a positive and productive relationship with History SA.

SA branch offered a \$500 bursary which allowed Anne Marie Matuschka, from the Mary Mackillop Centre in Penola, to attend the National Conference in Melbourne in late September 2010.

TEDxAdelaide: Museums Australia was a community partner for the TEDxAdelaide event, which took place on 6 November 2010. This was an in-kind arrangement, whereby recordings of the talks are being distributed through the MA networks as a way of increasing TEDxAdelaide's reach in the community. It is anticipated that this will be an annual event.

Membership Development

In 2011, MA (SA) Branch will be targeting smaller museums across SA that are not currently institutional members, raising awareness of MA and the benefits which membership can offer for smaller museums. As part of this focus, MA (SA) has recently taken up the offer of a free entry in History SA's Registry of Services, which is circulated to community museums across the State.

Advocacy

The SA Branch runs a series of events throughout the year – combining panel discussions, professional development and informal networking. The Branch subsidises member participation in this as much as existing funds allow.

The Panel event is the SA Branch's longest-standing and most popular annual event, attracting a broad audience. These are typically held during November each year, bringing together a group of presenters who can provide different perspectives on a topic of current interest. The 2010 event, *Inside Out*, brought together artists and curators to look at opportunities and issues associated with taking museums outside their building, and bringing unconventional collections into museums. This event was very well attended, attracting more than 40 participants.

Events

Monthly Breakfast: the Branch hosts an informal networking breakfast on the first Friday of every month except January. These have proved popular over several years, attracting both new members and regulars.

Christmas Breakfast: Starting in 2009, the SA Branch turned its December breakfast into a special Christmas breakfast, with gifts and prize draws. These events generally attract 2–3 times as many participants as the regular monthly breakfast, and have proved to be a relaxed and friendly way to complete the year.

Bulletins

The SA Branch issued some 44 e-Bulletins between 1st May 2010 and 28th February 2011, an average of one bulletin a week. Since October these have been distributed using the MA National website. The e-Bulletin distributes news of upcoming events, job advertisements and other news which may be of interest to the SA membership.

Content is sourced through submissions by members, along with additional items researched by SA Branch committee members. Members have indicated that they find these bulletins a valuable benefit of membership.

Developing our Sector

Professional Development Workshop: Each year (usually during winter) the SA Branch holds a half-day or full-day professional development workshop on an area of interest to the state membership. In 2010 there was a half-day event hosted by Darren Peacock, 'Getting started with social media'. The branch subsidises participation by members as much as possible, in particular to encourage participation by small and regional museums. Action/ items for special noting or attention of Council

2012 National Conference

The SA Branch looks forward to entering into discussions with the National Office (MANO) regarding how we can assist (and be assisted) with developing the National Conference schedule to realise a successful Conference in Adelaide in 2012. At present, all planning works are on hold until the PCO has been appointed by MANO, and a formal agreement of delineation of tasks between MA (SA)/MANO is achieved.

Tasmania

President	Chris Tassell
Vice-President	Elsbeth Wishart
Secretary	Linda Clark
Treasurer	Sue Atkinson
Committee members	
Bill Seager	Kate Morris
Elizabeth Adkins	Kirsten Brett

At Runnymede House on 16 April 2010, MA (TAS) held our AGM, and Sam Dix, manager of Narryna, gave a presentation on changes and future goals at the museum. A light lunch was provided by National Trust, and Arts Tasmania Deputy Director Steve Kyne also attended.

Committee member Elspeth Wishart organised a visit to Port Arthur. Members of MA (TAS) were treated to a very special day at Port Arthur on Friday 22 October 2010, with key staff providing an insight into new projects currently underway at this remarkable heritage site.

Member services

MA (Tas)'s blog site <<http://tassiemuseums.edublogs.org/>> is updated regularly with information on events happening around Tasmania, grant information, a list of conservators and consultants, Heritage Tasmania news, other organisations and conferences. Members can also send through information on what is happening in their museums/history groups, which is then emailed out to all members and colleague non-members.

Advocacy (Linda Clark)

As secretary and a museum consultant, Linda Clark works with history groups all over Tasmania and each group receives a resource folder. In this folder is information about the benefits of joining MA and in my Power Point presentations I show the MA website and our blog site. This has encouraged new groups to join in the last 12 months.

Projects

A textile workshop was held on Wednesday 23 Sept. 2010. This workshop was organised jointly by Arts Tasmania and Museums Australia. Textile Conservator Judith Andrewartha ran the workshop for history groups and other interested people. A web link for video footage and photos is available at <<http://tasmanianhistorygroups.edublogs.org/textile-workshop/>>

Partnerships

MA (Tasmania) has partnerships with Arts Tasmania, the National Trust of Tasmania, the Tasmanian Museum and Art Gallery (TMAG) and the Tasmanian Archives. Through these collegial links the state branch of MA manages joint sharing of expenses to run workshops and development events for Association members and sectoral non-members alike.

Direction/plans for 2011 and ongoing

MA (Tasmania) members will be invited in 2011 to join in a series of planned visits to other museum sites. We will continue to update members with information through our blog, providing details on resources and forthcoming events.

Victoria

President

Daniel Wilksch

Vice-President

Janice Croggon

Secretary

David DeMA (NT)

Treasurer

Ian Scott

Committee members

Jo-Anne Cooper

Karlie Hawking

Jim McCann

Giacomina Pradolin

Robyn Till

In 2010, an exciting and diverse range of professional development events were held in Victoria, the highlights being the Museums Australia National Conference at The University of Melbourne and the Victorian Museum Awards, held in the Melbourne Story Gallery, at the Melbourne Museum. 1,638 people attended the professional development opportunities throughout the year, including 600-plus delegates at the Museums Australia National Conference.

The branch publication, *INSITE*, solicited articles and interviews with visiting international speakers, resulting in a range of collections being written about from beyond Victoria. Articles covered the themes of Text, Private Museums, Cold, Value of Museums, and the Conference theme, Interesting Times.

MA (Vic) Museum Assistance Grants enabled museums to realise infrastructure projects that cost under \$10,000, covering the costs of practical requirements including museum and gallery fittings, equipment, repairs, signage, specialised services, tools and other items. Exhibition Services was also able to better support museum and gallery exhibition activities by increasing the upward-limit that organisations can apply for exhibition grants to the sum of \$10,000.

Following on from the success of the publication, *Exhibitions: a practical guide for small museums and galleries*, a new book was produced by Georgia Rouette, Manager, Exhibition Services, which focuses on exhibition design. With contributions from twenty industry experts, *Exhibition Design for Galleries and Museums: an insider's view* provides access for galleries and museums to current views on exhibition design, trends and methodologies.

2010 was the final year of the Community Collections Training Program (CCT), managed by Euan McGillivray, which was designed to recognise and support the

conservation of significant collections in community museums and the volunteers who care for them.

Victoria's Accredited Museums brochure was meanwhile developed by the MAP managers, Communications Manager and team. The brochure was distributed through the Melbourne Visitor Information Centre, Federation Square, and to Accredited museums.

In collaboration with Museum Victoria, MA (Vic) began developing a free, online cataloguing system for community collecting organisations throughout the state of Victoria. This project was made possible thanks to funding received from the Department of Business and Innovation (DBI). MA (Vic) provides project management and training experience to the project while Museum Victoria has provided web development skills. Together, staff from these two organisations worked effectively during 2010 to customise the system to user needs.

Western Australia

President **Soula Veyradier**
Vice-President **Lorraine Fitzpatrick**
Secretary **Christen Bell**
Treasurer **Robert Mitchell**

Committee members

Catherine Czerw **Cathy Day**
Barbara Matters **Phillipa Rodgers**
Kate Gregory **Jude Eastwood Savage**

Staff

Executive Officer **Jane King**

Professional Development Coordinator **Rosemary Fitzgerald**

Membership & Communications Co-ordinator **Suzanne Jess**

Publications & Promotions Coordinator **Anne Chapple**

Raising the Profile of museums and galleries

- MA-WA was awarded a 2010 State Heritage Award for a community organisation
- MA-WA continued with the regional museum brochures project, with its *Wheatbelt* publication launched in May 2010
- Museum Week 2010, 'Museums and social harmony': approximately 40 museums and galleries participated by organising public events during the week
- Online presence: MA-WA's website continues to be the major platform through which the state branch communicates, and now several WA Chapters have

set up groups to share information and ideas through this facility. MA-WA has also started using both Twitter and Facebook social media tools to facilitate and stimulate increased communications among members, colleagues, and others in the community.

- *Musing* was published three times during the year, with some articles picked up and published in the national quarterly, *Museums Australia Magazine*.

Professional Development

- The National Library of Australia Cultural Heritage Grant program allowed us to run conservation and disaster planning and recovery workshops in Broome, Geraldton, Cunderdin, Yarloop and Kalgoorlie.
- MA-WA held its State Conference in Kalgoorlie, with the theme in 2010: 'From the Beach to the Bush'.
- MA-WA has provided bursaries totaling \$20,060 for members to attend the National Conference in Melbourne; the State Conference in Kalgoorlie; and to participate in modules within the ECU Museum Studies course.
- A regular metropolitan workshop series began to focus on new technologies, with several workshops devoted to exploring this concept and the opportunities offered through it to museums and galleries. There were also several collaborative workshops, where Museums Australia partnered with another organization to deliver and host a workshop – for example the Art Gallery of Western Australia partnered with MA-WA to host a curatorial workshop, 'The Body', focusing on public programs and audience engagement.
- MA-WA developed and delivered workshops specific for Local Government arts officers: 'Hanging Around', concerned with management of local government art collections; and 'Beyond the Walls', involving interpretation, public art and heritage trails.

Chapter and Regional activities

- Vanessa Wiggin, from Artwork Conservation, attended Yarloop Workshops and the Kalgoorlie hub in 2010, and delivered half-day workshops on care of collections and conservation of metals.
- Greg Wallace, from DNS Services, kindly donated his time and expertise to attend the ABC Radio National 2008 Regional Museums award-winning institution,

Kodja Place, in Kojonup, south of Perth; he delivered a very valuable workshop on 'Establishing and Sustaining Digital Collections'.

- Kaye Soderlund, from Preservation Australia, delivered two full-day workshops, in Broome: on 'Disaster Planning and Preparedness'; and on care of collections and conservation of artworks and objects.
- The Embroiderers Guild of WA meanwhile attended Cunderdin Museum, and delivered a workshop on care of collections and preventative conservation of textiles.
- Greg Manzie, from Glyde Street Conservation, travelled to Geraldton to deliver a full-day workshop on care of photographic collections; and conservation of artwork and objects.

Advocacy

2010 was a busy year on the advocacy front, with several crucial issues coming to a head. These issues continue to be framed as the basis of our key messages, which we promulgate regularly in meetings with key government officials; in media releases; and through our association with other key bodies and partners. We continue to urge the state government to provide sufficient ongoing operational funding to our collecting institutions: to enable them to do their crucial job in preserving and interpreting our state's important moveable cultural heritage. For the first time, MA-WA provided comment on the 2010 State Budget, issued a media release, and gave radio interviews on this important subject.

MA-WA continues to advocate to both State and Local Government for improvements and structured support for regional and community-based collections. 2010 saw the commencement of the CollectionsCare Regional Hub in Kalgoorlie-Boulder, a project long-supported by MA-WA. We continue to support this project through our involvement on the advisory committee, and we look forward to the final report. In late 2010, MA-WA began informal discussions with the Western Australian Museum and the Department of Culture and the Arts as to how we could work more closely to improve support for regional and community museums. It is planned to progress this work further throughout 2011.

Things to look forward to in 2011

- Heritage Council partnership: MA-WA's partnership will see three new Interpretation Masterclasses delivered in 2011
- MA-WA has successfully obtained funding through the state government's DCA and Lotterywest, to conduct a Sector Training Review during 2011
- Museums Week 2011: the ICOM International Museum Day theme in 2011 is 'Museum and Memory', and we expect more than 50 museums and galleries to participate
- *Musing* magazine: the three themes for the year will be Memory, Presence and Frontiers
- The MA National Conference in 2011 will be held 14–20 November at the State Theatre Centre in Perth. Breaking new ground, the MA national conference will be a joint collaboration with the Interpretation Association of Australia (IAA). The theme of the conference will be 'At the Frontier: Exploring the Possibilities'.

National Networks

Review of National Networks

Museums Australia's National Networks (previously Special Interest Groups SIGs) encompass the specialist museum constituencies nationally, and their activities provide key membership benefits, both within the national association as a social body and in stimulating development in particular disciplinary areas of the museums sector nation-wide. A National Networks audit was undertaken by the National Office in 2010, and will continue in 2011, to determine levels of current and desired activity of each National Network – and by extension, the value of each Network to its particular constituency of members across Australia.

When the audit of Networks is finalised, and a Network Representatives Strategy Meeting held in March 2011, it may be the decision of Museums Australia Council to close several Networks that are inactive, or reinvent others – perhaps consulted as discussions groups on <maNexus>. Members of National Networks will be notified of any proposed changes and given opportunities to comment before any final decision is taken.

Museums Australia acknowledges the dedication of so many of the Network administrators, who volunteer their time and services to members.

New Networks

Archaeology Collections and Museums was established in 2009, but has only been actively providing services in 2010 – currently as a group on <maNexus>. The Network has strong plans for the future.

Aviation Museums National Network was established in late 2010, after great interest in the proposal from Australia's civil aviation museums and collections. The Network launched its presence with a conference in Melbourne following the MA National Conference in 2010.

CAUMAC Study

At recent CAUMAC gatherings there has been a general sense that the nature of the higher education sector in Australia has undergone profound, and insufficiently reviewed, changes in the last decade. The snapshot of the sector in the 1990s (*Cinderella Collections Reports*) was no longer considered current or relevant. Given the reasonable financial situation of CAUMAC in 2010, and

the initiatives of the National Council of MA with the establishment of a Membership Standing Committee, it was felt that the group needed both to reconnect with and re-identify the current status and interests of its constituency. A consultant was hired to undertake a new review of museums and collections in higher education with the purpose of:

- Identifying potential new members
- Identifying current trends in universities regarding collections
- Investigating models of governance

This work is still underway – to date more than 400 collections have been identified and more continue to be discovered. This does not mean there has necessarily been growth in the sector, however – since many that were previously listed are either no longer operational or have been transferred out of the sector. The current research has also thrown open many issues regarding the original definitions applied in the 1990s reports, by identifying other or new categories of collections – such as collections of digital objects; and collections and archives held by residential colleges, theological colleges and student organisations.

It is intended that this research, through sound review and current knowledge of CAUMAC's constituency, will enable CAUMAC to expand its membership base and dramatically improve the effectiveness of its advocacy with peak bodies such as Universities Australia.

Museums Historians Global Curator Exchange

In 2009 the Museum Historians' National Network (MHNN) of Museums Australia, and the Curators' Committee (CurCom) of the American Association of Museums (AAM, Washington) joined forces to offer a new international exchange program for their members: the Global Curator program. Members of each organisation formed an international committee to organise the program. The program offers a bursary to museum curators or independent museum professionals whose major job responsibilities are the care and interpretation of museum collections. Collections may be of any genre. Global Curator exchanges take place on an individual basis, rather than being dependent on institutional relationships, and provide professional development and networking opportunities for

established curators. The program was a success in its second year, 2010, and will run again in 2011, with continued support from the Museum Historians Network, that AAM's CurCom in the US, and ICOM Australia.

Education Network and Australian Curriculum Development

In 2010 the MA Education National Network (MAENN) provided detailed feedback to the developing draft of the new National History Curriculum, including comment provided specifically on matters such as the importance of site studies; the place of Aboriginal and Torres Strait Islander peoples' history in the draft document; lifelong learning; and the importance of visual literacy. Overall, MAENN was very pleased with the evolving direction and substance of the national History Curriculum, and looks forward to the next stages towards full implementation in Australian schools. MAENN will continue to be involved in providing feedback on other areas in the ongoing curricula development consultations, especially targeting the Arts thematic stream, where MA's National Education Network believes it has important art museums-sector experience and knowledge to contribute, and a learning resources enrichment and provision role to play.

Membership

Museums Australia membership finished in 2010 with a positive growth target achieved (after some downturn in previous years), encompassing a total of 1477 members.

Snapshot of Membership

MA's individual members range from professionals and executives to students and volunteers in small regional museums. MA's Individual Members may come from a wide variety of employment backgrounds and interests but share in common their interest in Australia's heritage and conservation and their continued involvement and commitment to the arts and cultural sectors.

While total Institutional Membership embraces 700 member institutions (both the largest and smallest in the country), in reality this number represents many thousands of individuals across Australia, since Institutional Membership connects into further networks, encompassing the hundreds of staff employed in MA's member institutions nationally.

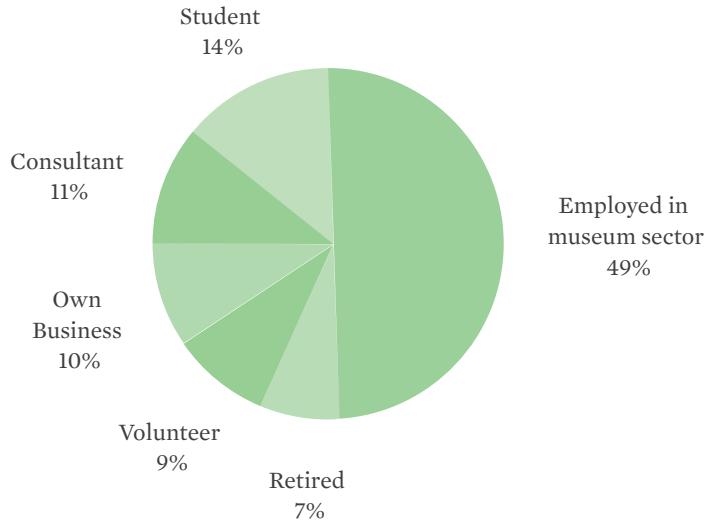
A breakdown of MA membership reveals that current distribution encompasses more than 17,000 people across the museums and galleries sector in Australia.

Total Membership

Total members	1477
Institutional	700
Individual	777
New members	274
Lapsed members	253
Total renewed	1203 (81%)

Membership has grown for the first time since 2001 and there are positive signs that 2011 will see another increase. The positive growth in 2010 member numbers can be attributed to several factors: a National Conference in a major eastern capital city (Melbourne), and the improved membership strategies implemented by the National Office (outlined in the Membership Strategy and Action Plan).

MANO anticipates that in 2011, member numbers will continue to grow, based on increased services at a State/Territory level as well as at a national level; better support for MA divisions from within the National Office (MANO); and a planned membership drive beginning late in 2010 based on information gained from the list of Australian collecting organisations that is currently being developed in the National Office. (No authoritative list of Australian museums and galleries has ever existed nationally, preventing sound data analysis and development plans – a deficiency that urgently needs correction.)



Individual membership by employment

New Members

New memberships in 2010 saw a major spike in the period July–September (similar spikes can be seen in previous years in the months leading up to a National Conference).

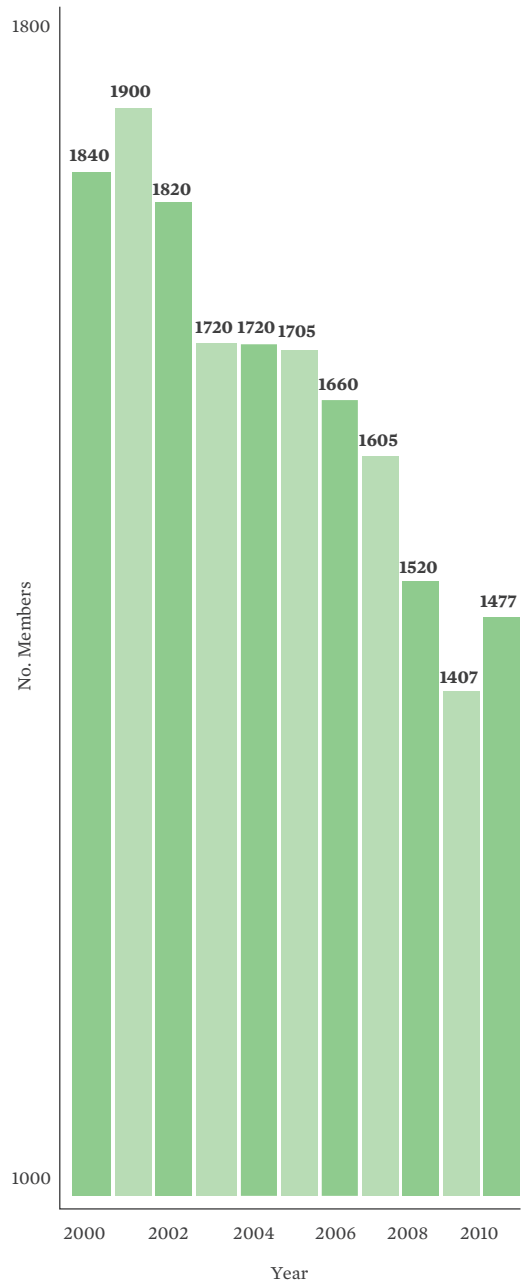
MANO targeted several large institutions directly in 2010, in an attempt to increase 7 ORG-level membership (notably targeting the South Australian Museum, South Australian Art Gallery, Questacon, National Library of Australia, and the Tasmanian Museum & Art Gallery). This direct approach to engage the few ‘absent’ major State or National institutions did not yield positive results to date; however MANO will continue to approach these institutions and others, sourced in a developing ‘Australian Museums and Galleries List’ as part of a membership drive in 2011.

Lapsed Membership 2009-2010

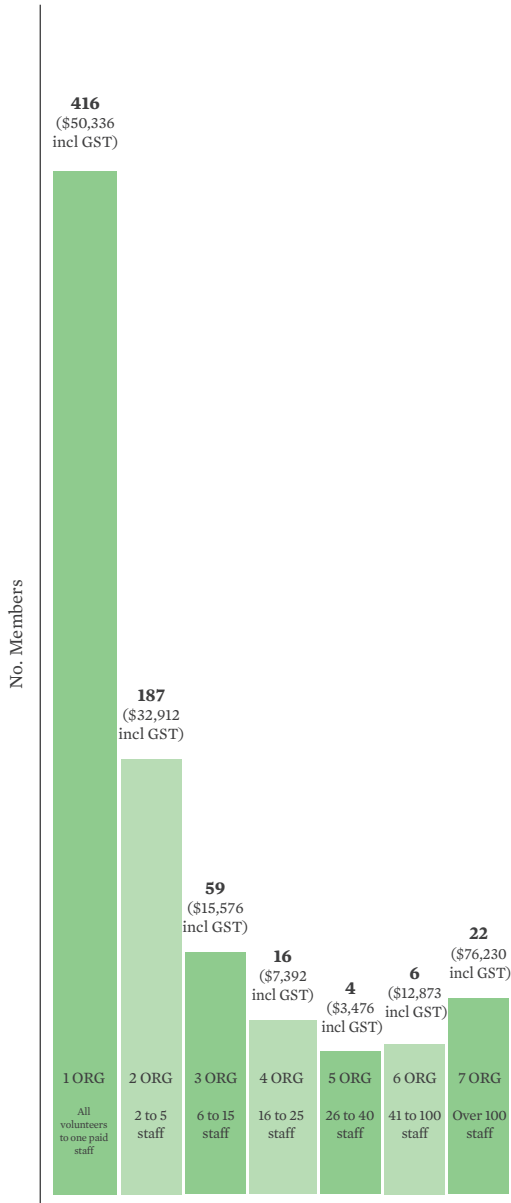
MANO has been specifically targeting lapsed members during 2010. A total of 321 lapsed members in 2009 were sent ‘lapsed member surveys’; of these, approximately 50 (15%) renewed their membership promptly when approached individually, with the back-up of personalised survey material. In September 2010, 168 members who had lapsed between January and June 2010 were also sent the survey, of which around 10% renewed. The remainder of 2010 lapsed members will be contacted in early 2011.

Results of the ‘lapsed member surveys’ were utilised in the development of a new Membership Strategy and Action Plan, wherein MA aims to improve membership retention from the current ~80 per cent to a sustainable 95 per cent of members renewing over the next five years.

Trends in total membership by year 2000-2010



Institutional membership by category

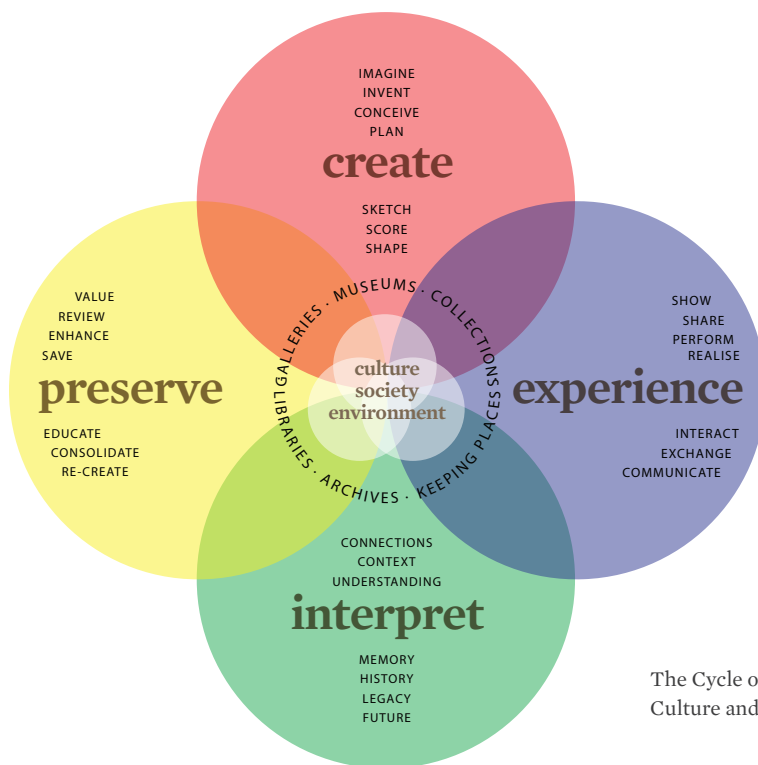


2010

Year

Total end of year membership by State/Territory





The Cycle of Culture and Heritage

.....
Advocacy

Museums Australia continued steady and committed work on national advocacy throughout 2010.

National submissions to Commonwealth government enquiries or public consultations were as follows in 2010:

- MA Submission to National Volunteering Consultation (27 pp., June 2010);
- MA Submission to Australian Government’s 2010 Collections Organisations Survey (29 pp., September 2010);
- MA Submission to National Cultural Policy consultation (34 pp., May 2011).

Meanwhile supplementing the above national submissions to Commonwealth government policy agencies, further submissions were made by divisions of Museums Australia throughout the year to relevant ministers or ministerial officers at the State/Territory branch levels.

In terms of steady and persistent work in the gathering of researched information, and development of advocacy report outlines through serial stages, special tribute must be paid to Marie Wood, whose focussed application on advocacy over several years (since the MA Futures Forum on six advocacy themes in 2008) continued to pay dividends in the progressive development of Museums Australia advocacy submissions across several areas simultaneously in 2010.

With such solid and interconnected work over several years, the final quality of MA submissions in 2010, with input from state branch colleagues, the National Office and Council, has achieved a standard immeasurably improved on submissions possible in earlier years.

Museums Australia continues to draw, in many of its submissions, on the comprehensive model of cultural process worked out several years ago (see diagram).

Publications

Museums Australia Magazine

Museums Australia Magazine (MAM) was fully redesigned at the end of 2009, with National Director Bernice Murphy taking on the role of in-house Editor (to reorganise the production methods of the magazine, incorporating an EMS platform and automatic website e-release at date of print-release; and to reduce costs expended annually on the Magazine). While a new design/production process was achieved, MAM did run late for three issues, but was back on schedule for Volume 19. MA thanks our members and subscribers for their patience, continued support and positive feedback on the new Magazine.

The new and improved Magazine is beautifully designed, and the content relevant, informative and accessible. MAM is also now available to access online at publication date through the MA website (with page-turning facility). Each issue is now made available to the public at large while it is current, and later archived for members-only access.

The Editor strives with each issue (or sometimes successive issues) to include articles encompassing a range of important constituency areas or continuing themes for national 'reach': regional concerns and volunteer-run museum needs; Indigenous issues and presence; art museums (brought up to attention alongside science and history museums); major state and national institutions' achievements – and especially noting their national or state outreach services; MA divisional activities; MA National Networks; and international outreach for the sector (especially through the close partnership with ICOM Australia in recent years).

In 2010 Museums Australia has introduced a new advertising opportunity for institutional members: an opportunity to advertise their exhibitions, events or programs (at very low costs comparatively). This jointly enables a new means of featuring member activities or projects more prominently, at members' own initiatives (without waiting for scarce review opportunities); meanwhile it increases advertising revenue for the Magazine, which ultimately augments resources for national services delivery. Under this new provision, institutional members are eligible for a 35% discount on exhibition advertising (with very attractive price-point opportunities to raise awareness of exhibitions, special

events and public programs). NOTE: Many member institutions remain unaware of the presence of this new benefit – and members' assistance in raising awareness of the facility is encouraged.

State publications

Several of MA's state branches publish comprehensive periodicals for their members. In 2010, MA (Vic) continued to produce its excellent *Insite* publications; meanwhile MA-WA similarly produced its fine *Musings*, and MA(NSW) its *Museum Matters*.

Following the resounding success of *Exhibitions: a practical guide for small museums and galleries* (the first step-by-step guide book on how to initiate, manage and deliver an exhibition) released in 2006, and sold out in 2010 (available online), Museums Australia (Victoria) has in 2010 developed and released a companion book, *Exhibition Design for Galleries and Museums: an insider's view*. This fine resource provides access for galleries and museums to researched articles and current views on exhibition design, trends and methodologies. Leading industry experts, designers, curators and directors, examine issues concerning touring exhibitions, university galleries, design for informal learning, green design, heritage buildings, natural history exhibitions, regional galleries, community museums, as well as ethics, art, multimedia, multicultural exhibitions and immersive exhibitions. Produced by Museums Australia (Victoria) with generous support from The Besen Family Foundation, Helen MacPherson Smith Trust and The Ian Potter Foundation, this publication is already a key new reference-resource for the sector nationally, in covering the broad range of issues impacting on the development of museum and gallery exhibitions today.

Review of Museums Australia Publications

Museums Australia offers members and non-members a range of publication for purchase and/or download. In 2010 it was decided by the National Council to establish a Publications Standing Committee, to review the current selection of resources on offer, for updates and re-release where necessary, and to ensure that MA publications available are relevant, appropriately revised and useful. One of the most popular publications, *Museum Methods*, is a priority for the Standing Committee's review and possible revision; however, the current version will still be in circulation until at least mid-2011.

Website & Online Facilities

The MA website was re-launched in April 2010, incorporating new design throughout, improved navigation and a features overhaul. These changes are the first of many, ongoing improvements to the national website (also better hosting state-level and other specialised, especially Networks, information and links). MA is now on a continuous course of regularly enhancing functions and resources for members and the public, with a monthly technical contract with our website architecture provider, to effect progressive improvements and changes.

Evolving improvements to the architecture and interface/functionality of the MA website continued through 2010. The new website went 'live' in April 2010, and improvements continue.

Now fully redeveloped, the integrated online membership content management system (CMS) provides members, the National Office and MA Divisions with the following facilities:

- Membership renewal and application on a self-service basis for members
- Direct access to membership details by Divisions
- Bulk e-mail facilities
- Online events registration and payment
- Various levels of access for members, Council and MA 'staff', to allow for online distribution of restricted information.
- MA has now entered into a maintenance contract with the website developers to ensure that any problems encountered with the website or membership database are dealt with in a timely fashion.
- Features that are still in the pipeline for the MA website include:
 - Magazine Rack, where past issues of Museums Australia Magazine will be readily available online in full for members
 - Grant Watch, to harvest to location/electronic platform the numerous state/territory, federal and private-sector grant opportunities relevant to MA members
 - In 2011 MA plans further improvement to the design of the front page of the national website, to include one-click faster access to branch pages and sub-navigational

access features; a more streamlined and attractive use the nine-tile portal format on the Home page; and a more active, useful presence, with sub-links, of ICOM Australia on MA's site, since ICOM's Australian National Committee is a key partner of the association.

Integration of Australian Government's 'Culture Portal'

In June 2010, the federal Department of Environment Protection, Water, Heritage and the Arts (DEWHA) defunded the highly popular online service known as the Culture Portal. Museums Australia was invited to take over the hosting of the Events function of the Portal, together with some of the Culture Portal's associated resources. With the help of Kathryn Wells, from the government's former Culture Portal facility, Museums Australia's website was enriched with many of the cultural resources previously available on the government information site – including, but not limited to, information on and links to the following resource-points for the sector:

- Collections management
- Copyright
- Grants
- Access & audiences
- Education
- Policy
- Web development

The resources essentially provide a collation of information already available disparately online, but collected and reorganised in pathways that are easy to navigate and utilise. All the resources retrieved from the federal government's former Culture Portal are now available for anyone visiting the MA website.

National Events Calendar

The Museums Australia national Events Calendar came about originally as part of the invitation from the federal government to take over services provided as part of the Culture Portal. National Council determined that the calendar should, at least initially, provide information only on Museums Australia-hosted events, until such time as resources could be sourced or made available to maintain a larger variety of relevant cultural, scientific, historical and related events nationally. The Events

Calendar was accordingly designed and incorporated in-kind into MA's existing website by Webtrax Web Services, and went live at the end of 2010.

<maNexus>

<maNexus> is Museums Australia's online social media and networking hub, available to members and non-members with an interest in the collecting sectors. <maNexus>, released in September 2009, has continued to slowly expand and take shape as a forum through which to air or pursue a variety of interests. It is also used for Council, Network and Branch business, and event promotion.

MA divisions online

Several of Museums Australia's numerous divisions (encompassing 23 National Networks, 8 S/T branches, and 18 sub-State/Territory Chapters) have their own web presence, together with additional resources being developed and uploaded for web access.

MA (Vic) has a dynamic website with facilities for online event registration, publications ordering and many other available resources online. MA (Vic) utilised the social media tool Twitter in the hosting of the National Conference in 2010, and this facility continues to maintain a following.

MA (WA) has also developed a vibrant online presence, including a new website and Facebook page. MA (Tas) has meanwhile developed an online blog for communication with their members.

Several of our numerous National Networks maintain their own websites or social networking tools, including (most recently) IMTALAP (for museum theatre constituencies) and the Maritime Museums Network.

Southern Highlands Illawarra Chapter (NSW) has created an eHive Group, whereby each of their museums are members and colleagues can access information on their collections through this online platform and storage facility. Far-North Coast Chapter (NSW) is meanwhile communicating with its own blog.

This picture provides a small snapshot of the increasing – and increasingly diverse – ways in which Museums Australia members are taking advantage of electronic tools for a variety of communication purposes and styles of conversation, work, access provision and information sharing.

.....

Awards

Museums Australia hosted and partnered several awards programs across Australia in 2010 for museums, galleries and individuals in the collections sector. In 2011, Museums Australia is launching the first national awards for museums and galleries (MAGNA) in the categories of Exhibition, Sustainability and Public Programs. Call for Entries open on 1 June 2011.

2010 MAPDA awards

The Museums Australia Multimedia and Publication Design Awards (MAPDA) celebrate excellence in design and communication in the museums and collections sector across Australasia. 2010 proved that MAPDA is not only strong, but continues to recruit widening interest. There were 231 entries received from 73 organisations from Australia and New Zealand, across twelve distinct design categories: Exhibition Catalogue (small); Exhibition Catalogue (major); Book; Poster; Corporate; Invitation; Magazine & Newsletter; Calendar of Events & Information Brochure; Fundraising & Membership; Education Material; Website; and Multimedia.

Entries are judged according to originality in creative idea; innovative concepts; level of design skill (typography, photography, etc); ability to communicate effectively; production values. All the 2010 winning entries displayed these qualities. Awards were also presented to 'Best in Show' winners for print media and electronic media (for Kaldor Public Art Projects (pictured right) and Lismore Regional Gallery projects, respectively); meanwhile a 'Judges Special Award' (to Object: Australia Centre for Craft & Design, was made for their exhibition-based website, *Menagerie*).

The success of MAPDA 2010 generated a small profit for the national Association. A comment is merited on the sensitivity of the MAPDA Awards to the economic environment. Design often flourishes in good times — in volume if not necessarily in quality. The overall number of entries in 2010 was down compared to previous years, and it was clear that some institutions did not enter due to budget constraints affecting the sector nationally. The MAPDA Committee is nevertheless hoping that MAPDA 2011 will be a bumper awards occasion — especially since the committee has already spotted a number of wonderful catalogues, invitations and websites that they trust will be entered.

The MAPDA Committee records special thanks to the National Portrait Gallery, Canberra, for again hosting the judging in 2010; and gratitude to the judges' institutions, for their support in allowing their staff to nurture these important Awards and engage in the final judging processes in Canberra.

Finally, the National Office of Museums Australia, in Old Parliament House, Canberra, is thanked for more affirmatively taking over the organisational side of the MAPDA Awards in 2010, for receiving and administering all entries from across the Australia and New Zealand, and enabling the Committee and judges to focus on their own expertise and contribution to the success of the now long-standing MAPDA Awards.

Victorian Museums Awards

Hosted by special media guest, Rod Quantock, the 16th annual Victorian Museum Awards were held on the 22 July, at the Melbourne Story Gallery, Melbourne Museum. The Victorian Museum Awards, organised by Museums Australia (Victoria), celebrate the value of the museums sector in Victoria. The 2010 Awards represented a strong diversity in museum type, location and collection, through the categories of Individual Award (Volunteer & Paid); Small, Medium & Large Museums; and Volunteer-run Museums. The 2010 Awards were a great success, all nominees were highly worthy of their public acknowledgement of services to the industry.

Partnership Awards

ABC Radio National Regional Museum Awards

The 2010 Regional Museums Award venture by ABC Radio National has had its biggest response yet, since its inception in 2008, receiving more than 100 nominations. Australia's regional museums, many of whom are entirely volunteer-managed, have once again delighted and amazed with their demonstration of the commitment, dedication and breadth of their collections and the steadfast support and involvement of the communities they serve.

Community service is accordingly a focus of the ABC Radio National Awards, and the ABC RN has also, especially utilising its Local Radio networks support, affirmatively focused on regional Australian communities, and the often small but vibrant local collections and museums that enhance the cultural life and historical memory of such communities, augmenting their regional connections and socio-economic development, especially through their support and services enhancing tourism.

The overall national ABC Radio National winner in 2010 was Richmond River Historical Society (RRHS), encompassing Lismore Regional Museum and housed in the old Lismore Municipal Building, (NSW). Fully volunteer-run, RRHS displayed outstanding and professional management of their collection and exhibitions, as well as the importance of community service with their education programs and focus on a strong cultural future. See <<http://www.richhistory.org.au>>

In the far north, Patakijiyali Museum, on Bathurst Island (Northern Territory), was awarded the Indigenous Cultural Centre/Keeping Place Award for 2010. Judges were impressed by the museum's striking representation of Tiwi culture, and the outstanding community initiatives aimed at including the Tiwi people (especially local Aboriginal elders and custodians) in volunteering, education initiatives and upholding of their distinctive heritage for future generations.

Towards the southern edge of the country, Narryna Heritage Museum, in Tasmania, was winner of the new award category for a small museum with less than a \$150,000 per annum operational budget. The judges noted that Narryna, a historic house (c.1836) within the

nationally historic precinct of Battery Point in Hobart, was outstanding among national entries this year in its forging of connections with educational institutions, notably achieving an internship partnership with the Australian National University, Canberra, involving some 40 students linked to or travelling for in-situ learning in Hobart per semester. The museum meanwhile has a significant Colonial collection, including outstanding costumes from the nineteenth century. Narryna was also featured on the ABC's *Collectors* program in 2010.

State Sector Awards

New South Wales and Queensland both host museums sector awards for their states (the IMAGinE Awards, and the Gallery & Museum Achievement Awards (GAMAA) respectively).

Reports on all the awards for 2010 are available as follows:

MAPDA 2010

<museumsaustralia.org.au/site/whatwedo_awards_mapda.php>
MAM Vol 19(2) November 2010

Victorian Museums Awards

<www.mavic.asn.au>
MAM Vol 19(2) November 2010

ABC Radio National Regional Museum Awards

<www.abc.net.au/rn/museums/>
MAM Vol 19(1) September 2010

IMAGinE Awards

<mgmsw.org.au/sector_development/2010_imagine_awards>
MAM Vol 19(2) November 2010

GAMAA

<www.magsq.com.au/01 cms/details.asp?ID=757>
MAM Vol 19(2) November 2010

.....

Events

Museums Australia and its 49 variously constituted divisions (23 National Networks, State/Territory Branches, and 18 sub-S/T Chapters) organised many educational and social events throughout 2010, including the National Conference, state conferences, chapter gatherings, and a variety of workshops, lectures and tours.

National Conference 2010

The 2010 Museums Australia National Conference was held at the University of Melbourne, Victoria, between 28 September and 3 October 2010.

While there were many discussions taking place around the theme *‘Interesting Times: New roles for collections’*, one significant thread was brought out through the plenary sessions, where Professor Richard Sandell from the UK, Morris Vogel from New York, and Joanne Orr from Scotland explored ways in which collections informed new understandings of social difference and change – looking at the different ways that museums had sought to illustrate social and political themes within communities. Dr J Patrick Greene (CEO, Museum Victoria) presented a long tradition of innovative display approaches from key US and European natural history collections.

Innovations for MA’s 2010 conference included:

- Integration of focussed side meetings conducted by the Art, Craft and Design and Performing Arts Special Interest Groups, which along with the Remote and Regional training day on Saturday, allowed for concentration on specific themes alongside the conference’s broad discussions;
- a ‘poster session’ displaying short papers and topical content in diverse formats;
- two ‘xChange’ panel sessions, where conference speakers presented five-minute talks on topics of interest, separate from their conference paper topics.

Amanda Smith (ABC RN) also hosted a discussion of the changing roles of collections as part of a Melbourne Conversations event supported by the City of Melbourne. Speakers included Professor Stephen Heppell from the UK who greatly animated all educators’ concern with museums as contemporary learning institutions; Michelle Hippolite, Kaihautu of Te Papa Tongarewau, Museum of New Zealand, with a stirring review of

biculturalism in action; David Revere McFadden from New York’s Museum of Arts and Design, reanimating visual arts presentations with artists using natural history concepts; and Professor Adrian Franklin, well-known to the audience from his role on the ABC television show *The Collectors*. Melbourne Conversations is a regular series presented by the City of Melbourne and MA was very pleased to be able to realise a public discussion on museums and collections as part of the 2010 Conference.

Museums Australia would like to thank its sponsors and supporters for their generous contributions to the success of the event, in particular the conference’s Principal Partner, the University of Melbourne.

Conference papers are available on the website <www.ma2010.com.au>

WA State Conference

The Making Connections: from the beach to the bush Conference held by Museums Australia (WA) was judged to be a great success, given the feedback from participants. Held in the historic twin city of Kalgoorlie Boulder, the conference was seen as timely, given the earthquake that occurred in the goldfields in April and caused a wealth of damage to the historic buildings, chiefly in the Boulder area. Delegates were thrilled to visit the region, many for the first time, and from unsolicited comments heard throughout the duration of the conference, they were very impressed with the architecture and preservation of the grand buildings in the area, loved the wide footpaths and streets and enjoyed the opportunity to visit some of the iconic sites in the region.

A total of 80 people attending the conference were treated to a program that was deliberately designed to highlight current issues that were pertinent to regional areas in general, and the goldfields in particular. As can be seen from the positive feedback, the conference was greatly enjoyed by the majority of delegates, with some people “scratching for a negative”.

The contribution, assistance and welcome that the conference delegates and committee received from the various businesses, staff members of organisations involved and general community was much appreciated by all, and it is a certainty that there will be many conference delegates returning to the goldfields, with friends and family, to explore and enjoy the area once again.

Working Spaces 4

Working Spaces was once again held by Museums Australia – Lachlan Chapter (NSW) from 15-17 October 2010. Devised in 2005 and first run in 2007, *Working Spaces* is a training program developed by the Lachlan Chapter in NSW for museum volunteers. Three streams of four workshops were held on topics including:

- Creating, Using and Caring for Digital Images
- Paper Conservation
- Making and Using Oral Histories
- The Art of Writing and Winning Grants
- Put Your Museum in the School Curriculum
- Day to Day Display Conservation

Museums Australia and our colleagues would like to specifically acknowledge and pay tribute to Glen Johns, the guiding force and organiser of *Working Spaces*, who passed away suddenly on 31 January 2011. Glen's dedication, enthusiasm and continued voluntary work for the Lachlan Chapter of MA provided the inspiration for *Working Spaces* which has become an invaluable training and networking opportunity for countless regional museum volunteers.

Working Spaces 5, to be held again at the regular venue near Yass, NSW (within striking distance of the National Museums that supply many of their staff as presenters), is pencilled in for the weekend commencing Friday, 14 October 2011.

..... **Institutional Members**

A M Rosenblum Jewish Museum
Abbey Museum of Art and Archaeology Inc
Abbotsleigh Archives
Academy Gallery - University of Tasmania
Academy of Mary Immaculate
ACT Historic Places
Adelaide City Council
Adelaide City Council Archives
AEG Ogden (Perth) Pty Ltd
Age of Fishes Museum
Albany Historical Society Inc
Albert Kersten Mining & Minerals Museum
Albury City Cultural Services
Alfred Hospital Nurses League Inc
Allansford Cheese World Museum
Altona Laverton Historical Society Inc
AMMPT Western Region Inc
Andrew Ross Museum Inc
Anne & Gordon Samstag Museum of Art
Antiquities Museum - University of Qld
ANZ Banking Museum
Ararat & District Historical Society Inc
Ararat Regional Art Gallery
Architecture Museum - University of SA
ARM Management Inc
Armidale Folk Museum
Army Museum of South Australia
Army Museum of WA Foundation
Art & Heritage Collections
Art Collection - Charles Sturt University
Art Exhibitions Australia Ltd
Art Gallery of NSW
Art Gallery of NSW Library
Art Gallery of Western Australia
Art on the Move
Artbank
Artgeo Cultural Complex
Artlab Australia
Arts Access Australia

Arts Space Wodonga
Arts Tasmania
Artspace Mackay
Augusta Historical Museum
Australian Army Military Police Museum
Australian Army Museum of Military Engineering
Australian Aviation Museum Bankstown
Australian Centre for Effective Partnerships
Australian Centre for Photography
Australian Centre for the Moving Image
Australian Council of National Trusts
Australian Country Music Foundation Inc
Australian Credit Union Archives
Australian Customs & Border Protection
Australian Gallery of Sport and Olympic Museum
Australian Gliding Museum
Australian History Museum
Australian Museum
Australian Museum of Clothing and Textiles
Australian National Maritime Museum
Australian National Museum of Education
Australian National Wildlife Collection
Australian Racing Museum
Australian Railway Historical Society
Australian Society of Archivists
Australian Tennis Museum
Australian War Memorial
Avondale Discovery Farm
B24 Liberator Memorial Restoration Fund
Bacchus Marsh Blacksmiths Cottage
Baking Industry Association of Australia Ltd
Ballarat Tramway Museum Inc
Banyule City Council
Barker College
Barna Mia - Dryandra Woodland
Barossa Regional Gallery
Bass & Flinders Centre
Bathurst & District Historical Society
Bathurst Regional Art Gallery

Bay Discovery Centre
Bayswater Historical Society
Beaconsfield Mine & Heritage Centre
Beenleigh Historical Village
Beleura House & Garden
Benalla Art Gallery
Benalla Costume & Pioneer Museum
Bendigo Art Gallery
Benedictine Community of New Norcia
Berndt Museum of Anthropology
Berrima District Historical Society
Berwick Mechanics Institute & Free Library
Beverley Aeronautical Museum
Bingara District Historical Society
Birdwood Military Museum Society Inc
Bishops Lodge Historic House
Bland District Historical Society
Blessed Sacrament Congregation & St Francis' Church Heritage Centre
Botanic Gardens of Adelaide
Bridgetown Historical Society Inc
Bright & District Historical Society
Brighton Historical Society
Brisbane Girls Grammar School Archives
Brisbane Water Historical Society
Brookton & District Historical Society (Inc)
Broome Historical Society
Broomehill Historical Society
Bruce Rock Museum
Buchan Heritage Group Inc
Buda Historic Home & Garden Inc
Bunbury Cathedral Grammar School
Bunbury Historical Society Inc
Bundanon Trust
Bundoora Homestead Art Centre
Burke Museum & Historical Precinct
Busselton Historical Society Inc
C. B. Alexander Foundation
Cairns & District Chinese Association Inc
Cairns Museum
Cairns Regional Gallery

Camden Historical Society Museum	Civil Aviation Historical Society Inc	Discover Eumundi: Heritage & Visitor Centre
Camperdown & District Historical Society Inc	Claremont Museum	Discovery - CSIRO
Canberra Museum & Gallery	Clunes Museum	Discovery Coast Historical Society Inc
Canine Museum Trust	Coal Creek Community Park & Museum	Dogwood Crossing @ Miles
Canning Districts Historical Society Inc	Coalfields Museum (Collie)	Doncaster Templestrowe Historical Society
Canowindra Historical Society & Museum	Cobb & Co Store Museum	Dowerin District Museum
Carnamah Historical Society	Coffs Harbour Regional Museum	Dungog Historical Society Inc
Carrick Hill	Cohuna & District Historical Society Inc	East Gippsland Historical Society Inc
Casey - Cardinia Library Corporation	Collection of Red Rock History	Eastern Goldfields Historical Society
Casino and District Historical Society Inc	Collie Heritage Group Inc	Echuca Historical Society Inc
Casino Folk Museum	Commissariat Store Museum	Eden Killer Whale Museum
Casterton & District Historical Society Inc	Community Cultural Development Whittlesea	Embroiderers' Guild Museum
Castlemaine Art Gallery & Historical Museum	Conjoint Museum of RANZCO. and RVEEH.	Emerald Pioneer Cottage & Museum
Casula Powerhouse Arts Centre	Contemporary Art Centre of SA	Endeavour Museum
Caulfield Grammar School Archives	Cooktown Historical Society Inc	Essendon Football Club Hall of Fame
Central Goldfields Art Gallery	Cootamundra Heritage Centre	Euston/Robinvale Historical Society Inc.
Central Queensland Military & Artefacts Museum Association Inc	Corowa District Historical Society	Evans Head Living Museum
Central West Libraries	Cowra and District Historical Society	Ex Victoria District Hospital Staff Association
Charles Darwin University Art Collection	Craft ACT: Craft and Design Centre	Fairfield City Museum and Gallery
Charlton Golden Grains Museum Inc	Craft Australia	Feather Clubs Association of Queensland Inc
Chas Roe Electronics Museum	Craft Victoria	Fed Square Pty Ltd
Chelsea & District Historical Society	Cranbourne Shire Historical Society Inc	Fighter World Incorporated - RAAF Base
Christian Brothers College Archives Museum	Cranbrook School Archives	Fire Services Museum of Victoria
Chung Wah Historical Group	Creswick Museum	Flagstaff Hill Maritime Village
Circular Head Heritage Centre	Crows Nest Historical Society	Flinders University Art Museum
City of Belmont	Cultural Collections - University of Newcastle	Footscray Community Arts Centre
City of Boroondara	Cultural Heritage & Collections Unit	Forbes & District Historical Association Inc
City of Charles Sturt - Cultural Heritage	Cultural Services Unit - Redland City Council	Fort Scratchley Historical Society Inc
City of Cockburn - Public Library	Cunderdin Museum	Foster & District Historical Society Inc
City of FreMA (NT)le Art Collection	Cundletown & Lower Manning Historical Society	Francis Burt Law Education Centre
City of Gosnells Museum	Cunningham Dax Collection	FreMA (NT)le Prison
City of Joondalup	Curatorial Services Unit City of Port Phillip	Friends of Churchill Island Society Inc
City of Kalgoorlie-Boulder	Daylesford & District Historical Society Inc	Friends of Ida Bay Historical Society Inc
City of Melbourne / City Gallery	Deaf Children Australia	Friends of Soldiers Memorial Avenue Inc
City of Melville Museum	Deakin University Art Collection & Galleries	Friends Of The Cerberus
City of Perth Art & Cultural Heritage Collection	Design Forum Tasmania	Friends of the Geelong Botanic Gardens Inc
City Of Stirling - Mt Flora Regional Museum	DiaMA (NT)ina Health Care Museum	Friends of the National Museum
City of Wanneroo	Dingley Village & District Historical Society	Friends of the RAAF Museum
City of Whitehorse	Diocese of Maitland-Newcastle	Gallipoli Memorial Club Museum
		Geelong Gallery

Geoffrey Kaye Museum of Anaesthetic History	Hazelhurst Regional Gallery & Arts Centre	Kiama & District Historical Society
George Hanna Memorial Museum	Heide Museum of Modern Art	Kiewa Valley Historical Society Inc.
Geraldton Historical Society Inc	Henry Forman Atkinson Dental Museum	Knox Grammar School Archives
Geraldton Regional Art Gallery	Henry Lawson Society NSW Inc	Knox Historical Society
Gilgandra Museum & Historical Society Inc	Heritage Hill Museum & Historic Gardens	Koorie Heritage Trust
Gin Gin & District Historical Society Inc	Hinkler House Memorial Museum	Koroit & District Historical Society
Gippsland Armed Forces Museum Inc	Historic Houses Trust NSW	Krowathunkooloong Keeping Place (GEGAC)
Gippsland Art Gallery	Historical Society of Cockburn Inc	Kununurra Historical Society
Girringun Aboriginal Corporation	Historical Woolscour Association Inc	Kwinana Heritage Group Inc
Glen Eira Historical Society	History House Museum	Kyneton Museum
Glen Innes & District Historical Society	History Trust of South Australia	La Trobe University Art Museum
Glenalvon Stables Museum	Horsham Regional Art Gallery	Lady Denman Heritage Complex
Glenelg Shire Council Cultural Collection	Hurstville City Museum & Gallery	Lake Goldsmith Steam Preservation Assoc.
Gold Coast City Art Gallery	Ian Potter Museum of Art	Lake Grace Australian Inland Mission Hospital Museum
Gold Coast Hinterland Heritage Museum Inc	Illawarra Historical Society Inc	Lake Macquarie & District Historical Society
Golden Dragon Museum	Iluka History Group Inc	Lake Macquarie City Art Gallery
Golf Society of Australia	Inglewood & District Historical Society Inc	Lambing Flat Folk Museum
Gordon White Library - Mackay Libraries	Inglewood Development & Tourism Committee Inc	Landsborough & District Historical Society
Goulburn Regional Art Gallery	Innisfail & District Historical Society	Lawrence Wilson Art Gallery
Grafton Regional Gallery	Ipswich Art Gallery	Leongatha & District Historical Society
Grainger Museum	Irwin District Historical Society	Levendale and Woodsdale History Room Inc
Great Lakes Historical Co-operative Society	Italian Historical Society - Co.As.It	Lightning Ridge Historical Society
Greek Orthodox Community of NSW	Jarrahdale Heritage Society	Lithgow Small Arms Factory Museum Inc.
Grenfell Historical Society Inc	Jerilderie & District Historical Society	Liverpool City Library and Museum Services
Griffith Artworks, Qld College of Art	Jewish Holocaust Centre Inc	Logan Art Gallery
Griffith Pioneer Park Museum	Jewish Museum of Australia	Logan City Historical Museum Society Inc
Gulgong Historical Society Inc	John Curtin Prime Ministerial Library	Longreach Powerhouse Museum
Gundagai Historical Museum Inc	John Flynn Place Museum	Loreto Mandeville Hall Toorak
Gunnedah Rural Museum	Juluwarlu Aboriginal Corporation	Loxton Historical Village
Gympie Regional Gallery	June & District Historical Society	Machinery Preservation Club of WA Inc
Hale School	Jurien Interpretation Centre Inc	Macleay District Historical Society
Harden-Murrumburrah Historical Society	Kalamunda & District Historical Society	Macleay River Historical Society Inc
Harry Brookes Allen Museum of Anatomy and Pathology	Kaleidio Pty Ltd	Maitland City Council - Maitland Gaol
Harry Daly Museum	Kandos Bicentennial Industrial Museum	Maitland Regional Art Gallery
Harvey Districts Historical Society Museum	Kangaroo Valley Historical Society	Mallacoota & District Historical Society Inc
Hastings-Western Port Historical Society	Katanning Art Gallery	Man From Snowy River Folk Museum
Hawkesbury Regional Gallery and Museum	Katherine Museum	Mandurah Community Museum
Hawks Museum	KE Software Pty Ltd	Mandurah Historical Society Inc
Hay War Memorial High School	Kenmore Hospital Museum	Mangkaja Arts Resource Agency
	Kerang Historical Society Inc	Manning Valley Historical Society Inc

Mannum Dock Museum of River History	Museum & Art Gallery of the NT	Nepean District Historical Society
Mansfield Historical Society	Museum of Australian Army Flying	Nepean Historical Society Inc
Maritime Heritage Association of Victoria	Museum of Australian Currency Notes	NETS Victoria
Maritime Museum of Tasmania Inc	Museum of Australian Democracy Old Parliament House	Newcastle Gaol
Maroondah Art Gallery	Museum of Australian Military Intelligence	Newcastle Maritime Museum Society
Mary MacKillop Place Museum	Museum of Brisbane	Newcastle Museum
Maryborough-Midlands Historical Society	Museum of Chinese Australian History	Newcastle Region Art Gallery
Mater Archives and Heritage Centre	Museum of Fire Inc	Nullumbik Shire Council - Arts and Culture
May Gibbs Nutcote	Museum of Freemasonry	Nobelius Heritage Park & Emerald Museum
McClelland Gallery + Sculpture Park	Museum of Human Disease	Noosa Museum
McCrossin's Mill Museum	Museum of Old & New Art	Norfolk Island Museum
Medical History Museum	Museum of the Riverina	North Coast Institute of TAFE
Melbourne Cricket Club Museum	Museum Resource Centre of Southern Inland Queensland	North Stradbroke Island Historical Museum
Melbourne Girls Grammar School	Museum Studies - University of Sydney	Northam Heritage Forum Inc
Melbourne's Living Museum of the West	Museum Victoria	Northern Territory Library
Melrose Districts History Society	Museums Aotearoa	NRETAS Library
Melton & District Historical Society	Nagambie Historical Society Inc	NSW Hall of Champions
Merimbula-Imlay Historical Society	Nambour & District Historical Museum	NSW Lancers Memorial Museum Inc
Merrigum Historical Society	Narrabri & District Historical Society Inc	NSW Schoolhouse Museum
Miles Historical Village	Narrandera Parkside Cottage Museum Inc	Nursing Museum - Faculty of EHS
Millicent National Trust - Living History Museum	Narryna Heritage Museum	Nursing Museum Royal Brisbane Hospital
Millthorpe & District Historical Society	National Alpine Museum of Australia Inc	Object Australian Centre for Craft & Design
Monarch Historical Museum	National Capital Educational Tourism Project	Old Dubbo Gaol - Dubbo City Council
Monash Faculty of Science Instrument Collection	National Film & Sound Archive - Collection Development & Outreach Division	Old Gippsdown - Gippsland Heritage Park
Monash Gallery of Art	National Gallery of Australia	Old Kobeelyans' Association
Monash Science Centre	National Gallery of Victoria	Old Melbourne Gaol
Morawa District Historical Society	National Museum of Australia	Omeo Historical Society
Mornington & District Historical Society Inc	National Pioneer Women's Hall of Fame Inc	Ongerup & Needilup District Museum
Mornington Peninsula Regional Gallery	National Portrait Gallery	Orange & District Historical Society Inc
Morpeth Museum	National Sports Museum	Our Lady's Nurses for the Poor
Mosman Art Gallery & Community Centre	National Trust of Australia (Tasmania)	Ozbadge
Mosman Library	National Trust of Queensland	Packaging Council of Australia
Mount Bauple & District Historical Society	National Trust of SA - Olivewood Estate	Padua College
Mowanjum Art & Culture Centre	National Trust of South Australia	Parkes & District Historical Society Inc
Mt Wilson & Mt Irvine Historical Society	National Vietnam Veterans Museum	Parks and Recreation Services - Goulburn
Mt. Victoria & District Historical Society	National Wool Museum	Parks Victoria
Mundaring District Museum	Naval Heritage Collection	Parramatta Visitor and Heritage Centre
Murdoch University Art Collection	Nebo Museum	Patakijiyali Museum
Murtoa & District Historical Society		Paynesville Maritime Museum
		Penrhos College

Perc Tucker Regional Gallery	Rail Heritage WA	Shire of Manjimup - Timber & Heritage Park
Performing Arts Collection S.A.	Ravensthorpe Historical Society Inc	Shire of Roebourne Local History Office
Perth College	Raymond Terrace Historical Society	Shire of Sandstone
Perth Institute of Contemporary Arts	Redcliffe Museum	Shire of West Arthur
Phillip Island & District Historical Society Inc	Redland Museum Inc	Shire of Woodanilling
Pine Rivers Heritage Museum	Richmond Burnley Historical Society Inc.	Shrine of Remembrance
Pittsworth Shire Pioneer Village Museum	Richmond Main Mining Museum	Singleton Historical Society & Museum
Port Albert Maritime Museum	Richmond River Historical Society Inc	Sir Edgeworth David Memorial Museum
Port Fairy Historical Lifeboat Station	Richmond Vale Railway Museum	Sir William Dobell Memorial
Port Fairy Historical Society Inc	Rippon Lea Estate	Sisters of Mercy - Perth
Port Kembla Heritage Park	RMIT Gallery	Sisters of St John of God Heritage Centre
Port Macquarie Historical Society Inc	Rockhampton & District Historical Society	South Australian Aviation Museum Inc
Port Melbourne Historical Society	Rockhampton Art Gallery	South West Aboriginal Land & Sea Council
Port of Echuca	Rockhampton Heritage Services	St Helens History Room
Port of Yamba Historical Society	Rockingham District Historical Society	St Kilda Historical Society
Port Stephens Historical Society	Rottneat Island Museum	St. Catherine's School Museum
Port Welshpool & District Museum	Royal Australasian College of Surgeons	Stanley Athenaeum & Public Room
Powerhouse Museum	RANZCOG Museum	Stanton Library
Presbyterian Ladies College	Royal Australian Infantry Corps Museum	State Library of Victoria
Preservation Australia	Royal Botanic Gardens Melbourne Library	Stawell Historical Society Inc
Prince Henry Hospital Nursing & Medical Museum	Royal Children's Hospital Archives	Stratford & District Historical Society Inc
Professional Historians Association (Vic)	Royal Flying Doctor Service of Australia QLD	Strehlow Research Centre
Public Galleries Association of Victoria	Royal Historical Society of Victoria Inc	Subiaco Museum
Puffing Billy Preservation Society	Royal Hobart Hospital Graduate Nurses Association Inc	Sunshine & District Historical Society
Pyramid Hill & District Historical Society	Royal Melbourne Hospital Archives	Swan Hill Regional Art Gallery
Qantas Founders Museum	Royal North Shore Hospital Museum	Swinburne University of Technology - Library
QLD Performing Arts Centre Museum	Royal Perth Hospital Museum	Sydney Cricket & Sports Ground Trust
Queen Victoria Museum & Art Gallery	Royal Western Australian Historical Society	Sydney Harbour YHA
Queenscliffe Historical Museum Inc	S H Ervin Gallery	Sydney Heritage Fleet
Queenscliffe Maritime Museum Inc	Salvation Army Heritage Preservation Centre	Sydney Jewish Museum
Queensland Air Museum	Samford District Historical Museum Society	Sydney Tramway Museum
Queensland Ambulance Museums	Santa Maria College	Sydney University Museums
Queensland Art Gallery	Sarina District Historical Centre	Tableland Regional Gallery
Queensland Energy Museum Inc.	SCEGGS Darlinghurst	Talbot Arts & Historical Museum Inc
Queensland Maritime Museum	Scone & Upper Hunter Historical Society Inc	Tamworth Base Hospital & Health Service
Queensland Museum	Scout Heritage Centre of Western Australia	Tamworth Historical Society Inc
Queensland Police Museum	Scout Heritage Victoria	Tamworth Regional Gallery & Tamworth Power Station Museum
QUT Art Museum	Seymour and District Historical Society Inc	Tarrawarra Museum of Art
R.A.A.F. Museum	Shepparton Art Gallery	Tasmanian Cricket Museum
RAAFA Aviation Heritage Museum of WA	Shire of Kojonup	Tasmanian Wool Centre

Tatura and District Historical Society	The WA Police Historical Society	Walhalla Heritage & Development League
Temora Rural Museum	Thredbo Historical Society Inc.	Wandin and District Historical Society
Tenterfield & District Historical Society Inc	Tongarra Museum	Wangaratta Historical Society
The Anglican Church of Australia - Diocese of Perth - Archives	Toowoomba Historical Society	Waroona Historical Society
The Army Museum of NSW	Toowoomba Regional Art Gallery	Warracknabeal Historical Society
The Arts Centre-Performing Arts Collection	Town of Kwinana	Warrnambool & District Historical Society
The Australian Country Hospital Heritage Association Inc	Town of Vincent	Warwick Art Gallery Inc
The Australian Golf Heritage Society Inc	Trans-Australia Airlines Museum	Wave Rock Management - Hyden Hotel
The Australian Motorlife Museum	Transport and Main Roads Heritage Centre	Wesley Hobart Museum
The Australian National Aviation Museum	Trinity College - Art & Archives	WACA Museum
The Beck Museum Aviation and Military Collection	True Blue Visitor Information Centre	Western Australian Museum
The Bundaberg Historical & Museum Society	Trustees of ANZAC Memorial Building	Western Bulldogs
The Central Highlands Tourist Railway	Tweed River Art Gallery	Western Plains Cultural Centre
The Chinchilla Historical Society Inc	Tweed River Regional Museum	Whale World
The Cyril Kett Optometry Museum	Uleybury School Museum	Whiteman Park
The Duldig Studio	Ulverstone History Museum	Whittlesea Historical Society Inc
The Embroiderers Guild of WA (Inc)	UNE Heritage Centre	Whyalla Maritime Museum
The Friends of Eden Vale Inc	Uniting Care Burnside	Wide Bay Hospital Museum Society Inc
The Great Beyond Explorers Hall of Fame	Uniting Church Archives	William Clarke College
The Hahndorf Academy	University of Ballarat Art and Historical Collections	Willoughby City Council
The Hills Grammar School	University of QLD Anthropology Museum	Willoughby District Historical Society
The Johnston Collection	University of SQ - Historical Archives	Wing Hing Long Museum Inc
The Kodja Visitor Centre	UTAS Cultural Activities Committee	Winton District Historical Society
The MacArthur Museum Brisbane	University of the Sunshine Coast Gallery	Woody Yaloak Historical Society Inc
The Melbourne Athenaeum Library	Unley Museum	Wollondilly Heritage Centre
The Mental Health Museum W A	Urrbrae House Historic Precinct	Wollongong City Gallery
The Merredin Museum & Historical Society	UTAS Academy of the Arts	Wongan Hills & District Museum
The Minerals Heritage Museum	VALA Libraries - Technology and the Future	Wonthaggi & District Historical Society Inc
The Mulgrave Settlers Museum	Vernon Systems Ltd	Woods Point Museum
The Peninsula School	Victoria Barracks Historical Society Brisbane	Woolmers Estate
The Pioneer Valley Museum at Mirani	Victoria Barracks Museum	Wubin Wheat Bin Museum
The Prospect Heritage Trust Inc	Victoria Police Museum	Wyalkatchem CBH. Agricultural Museum
The Rocks Discovery Museum	Victorian Jazz Archive Inc.	Yackandandah & District Historical Society
The Royal Australian Artillery Historical Society of WA Inc	Victorian Telecommunications Museum Inc	Yanco Powerhouse Museum
The Sovereign Hill Museums Association	Villa Alba Museum Inc.	Yarloop Workshops Inc
The St John Museum	Vintage Museum	Yarra Ranges Regional Museum
The Tractor Museum of W A	Visual Arts Touring Country Arts SA	Yass and District Historical Society Inc.
The University of Queensland Art Museum	WA Medical Museum	Yilgarn History Museum
	Wagga Wagga Art Gallery	Yugambah Museum
	Walgett & District Historical Society	Zoology Museum, University of New England

